

United Way  
of Central Alabama, Inc.





# Together, We Change Lives

*When you give to United Way of Central Alabama, your gift is combined with thousands in our community and, together, we change lives for the better.*

## Your gift enables us to:

### **Support partners and programs.**

More than 100 partner agencies and programs act as a safety net, supporting those who need us most throughout Central Alabama.

### **Respond to emerging needs.**

Whether in the aftermath of disaster or in response to unmet needs, we provide solutions to address immediate crises and long-term community advancement.

### **Innovate services to address complex issues.**

We continuously innovate our methods of service by creating new programs, coalitions and processes to solve complex problems.

# Our Neighbors in Need

From infants and children to seniors and veterans, our neighbors in Central Alabama need our help.

Nearly **20%** of our children live in poverty.

**1 in 7** Central Alabama children are food insecure.

**14%** of households with seniors face food insecurity.

**27%** of Central Alabama 4th graders are proficient in math.

**55%** of Central Alabama 4th graders are proficient in reading.





# When You Support United Way

**You give everyone the opportunity to have a good life** — a quality education that leads to a stable job and enough income to support a family through retirement and good health.

Your support provides assistance, resources and guidance in four key areas: health, education, financial stability and access to services. This comprehensive approach makes a bigger impact on our neighbors' lives.

**Below are some examples of how you made a difference in 2022.**

**408,182** meals served to local seniors through **Meals on Wheels**

**9,118** books distributed to children through **Success By 6**

**29,946** calls received for assistance through **2-1-1 Connects**

## Improving Mental Health

To meet the growing crisis in mental health, United Way invests in programs that provide mental health support throughout the community.

- Outpatient counseling
- Substance misuse intervention
- Domestic violence and abuse shelters
- Youth mental health services
- Crisis hotlines
- Grief support

# Partners and Programs for Positive Change

Your support of more than 100 partner agencies and programs helps people in Central Alabama thrive.

- ● ● ● ● ● 2-1-1 of Central Alabama
- A.G. Gaston Boys & Girls Club
- ● ● ● ● ● AIDS Alabama, Inc.
- Alabama Goodwill Industries, Inc.
- ● ● ● ● ● Alabama Head Injury Foundation, Inc.
- ● ● ● ● ● Alabama Kidney Foundation, Inc.
- ● ● ● ● ● Aletheia House
- ● ● ● ● ● The Amelia Center
- ● ● ● ● ● American Cancer Society
- ● ● ● ● ● American Heart Association, Inc.
- ● ● ● ● ● American Red Cross – Mid Alabama Region
- ● Arc of Central Alabama
- Arc of Shelby County
- Arc of Walker County
- Better Basics, Inc.
- ● ● ● ● ● Big Brothers Big Sisters of Greater Birmingham
- Birmingham Jewish Federation
- ● Birmingham Urban League
- Blount County Aid to Homeless Children (DHR)
- Blount County Children's Center
- ● ● ● ● ● The Bold Goals Coalition
- Boy Scouts of America – Black Warrior Council
- ● ● ● ● ● Boy Scouts of America – Greater Alabama Council
- ● ● ● ● ● Boys & Girls Clubs of Central Alabama, Inc.
- ● BridgeWays
- Butterfly Bridge Children's Advocacy Center
- ● ● ● ● ● Cahaba Valley Health Care
- ● ● ● ● ● Catholic Family Services
- ● ● ● ● ● Central Alabama Children's Fund - Central Alabama
- Central Alabama Children's Fund - Blount County
- Central Alabama Children's Fund - Chilton County
- Central Alabama Children's Fund - Jefferson County
- Central Alabama Children's Fund - St. Clair County
- Central Alabama Children's Fund - Shelby County
- Central Alabama Children's Fund - Walker County
- Central Alabama Wellness
- ● ● ● ● ● Childcare Resources
- ● ● ● ● ● Children's Aid Society of Alabama
- ● ● ● ● ● Children's of Alabama
- Chilton County Emergency Assistance Center
- Christian Love Pantry, Inc.
- ● ● ● ● ● Collat Jewish Family Services
- ● ● ● ● ● Community Food Bank of Central Alabama
- ● ● ● ● ● Community HIV Partnership
- ● ● ● ● ● Concerned Citizens for Our Youth, Inc.
- ● ● ● ● ● Crisis Center
- ● ● ● ● ● Daybreak - Family Resource Center of NW Alabama
- Developing Alabama Youth Foundation, Inc.
- ● ● ● ● ● Disability Rights and Resources
- ● ● ● ● ● Disaster Recovery



- ● ● Easterseals of the Birmingham Area
- Easterseals West Central Alabama
- ● Family Connection, Inc.
- Family Sunshine Center
- ● ● Fellowship House
- ● ● Financial Stability Services
- ● ● Gateway
- ● ● Girl Scouts of North Central Alabama
- ● ● Girls Incorporated of Central Alabama
- ● ● Glenwood, Inc.
- ● ● Greater Birmingham Habitat for Humanity
- ● ● Healthy Communities
- ● ● Help Me Grow
- ● ● Hispanic Interest Coalition of Alabama
- ● ● Impact Family Counseling, Inc.
- Kelsey's Place
- ● ● Lakeside Hospice, Inc.
- Legacy YMCA
- Legal Aid Society of Birmingham
- ● ● Levite Jewish Community Center
- ● ● The Literacy Council
- Meals on Wheels of Central Alabama
- ● ● Oasis Counseling for Women and Children
- ● ● Pathways
- ● ● Positive Maturity
- ● ● Priority Veteran
- Raleigh's Place
- ● ● Ronald McDonald House Charities of Alabama
- ● ● Safehouse of Shelby County
- ● ● Salvation Army Birmingham Area Command
- ● ● Salvation Army – Walker County

- ● ● ● ● Senior Support Fund of Central Alabama
- Shelby County Children's Advocacy Center – Owens House
- Shelby Emergency Assistance, Inc.
- ● Sickie Cell Disease Assoc. of America, Central Alabama Chapter
- SPAN (Special Programming for Achievement Network)
- St. Clair Children's Advocacy Center – The Children's Place
- St. Clair County Day Program, Inc.
- St. Clair County Department of Human Resources
- ● ● ● ● Success By 6
- ● ● Travelers Aid Society of Birmingham, Alabama, Inc.
- ● ● ● ● United Ability
- ● ● United Community Centers, Inc.
- ● ● United Way Area Agency on Aging of Jefferson County
- ● ● United Way Hands On
- ● ● United Way Housing Alliance
- ● ● Workshops Empowerment, Inc.
- YMCA of Chilton County
- ● YMCA of Greater Birmingham, Inc.
- ● ● ● YWCA of Central Alabama



## SERVING RESIDENTS OF:

- Blount ● Chilton ● Jefferson ● St. Clair ● Shelby ● Walker

# Guidelines for Annual Giving

Annual Income	Suggested Gift Amount
Up to \$19,999 .....	1 hour's pay per month
\$20,000 - \$49,999 .....	1%
\$50,000 - \$99,999 .....	2%
\$100,000 and up .....	3%

Levels of Leadership	
Tocqueville Society .....	\$10,000 and above
Builders Society.....	\$5,000 to \$9,999
Gold Feather .....	\$3,500 to \$4,999
Silver Feather.....	\$2,000 to \$3,499
Red Feather .....	\$1,000 to \$1,999

**Designation Policy**

Designations require a minimum gift of \$25 for partner agencies and \$1,000 for non-United Way agencies. To view all details, go to: [uwca.org/designation](http://uwca.org/designation).

Give online at [uwca.org/give](http://uwca.org/give),  
in person within your workplace  
or by mail to:  
**United Way of Central Alabama**  
**P.O. Box 320189**  
**Birmingham, AL 35232-0189.**



# Leadership Giving Societies

Our leadership societies are made up of donors who give \$1,000 or more to the annual campaign and endowment. These shared-interest groups make it easy for you and your family to get involved and make a difference in Central Alabama.



## **Tocqueville Society**

United Way of Central Alabama's Tocqueville Society is recognized nationally for its excellence. More than 900 members contribute in order to help support those in need. Matching funds available. For more information, please email [tocquevillesociety@uwca.org](mailto:tocquevillesociety@uwca.org).



## **Builders Society**

United Way of Central Alabama's first major giving society. Matching funds available. For more information, please email [builders@uwca.org](mailto:builders@uwca.org).



## **J. Mason Davis Leadership Society**

This society brings together African American changemakers who champion diversity and opportunity, and are striving to positively impact the community through a shared affinity for philanthropy, volunteerism and advocacy. For more information, please email [jmdleadershipsociety@uwca.org](mailto:jmdleadershipsociety@uwca.org).



## **Women United**

United Way of Central Alabama's leadership giving society for women. For more information, please email [womenunited@uwca.org](mailto:womenunited@uwca.org).



## **Young Philanthropists Society**

United Way of Central Alabama's leadership giving society for young professionals. For more information, please email [yps@uwca.org](mailto:yps@uwca.org).

# Get Involved by Volunteering

One of the best ways to invest in your community and make it a stronger, healthier place to live and create meaningful change is by volunteering. From corporate and civic groups to families and individuals, there are a wide variety of volunteer opportunities throughout the year that span our different impact areas.

Join a **United Way Visiting Allocation Team (VAT)** and help make decisions about which community programs will be a good investment of United Way donations.

**Meals On Wheels** volunteers are needed in our kitchen as well on the road to deliver a life-changing difference to homebound seniors across Jefferson County.

**Tax Prep Volunteers** are the key to “free” in United Way’s Free Tax Preparation program. We offer a variety of safe, socially distant year-round volunteer opportunities. We welcome volunteers from all backgrounds.

**United Way Hands On** connects people and groups with organized, meaningful volunteer opportunities to help bring about positive social change. Some of the great ways to get involved in your community are: cleaning up a neighborhood, building a playground and helping with a bike rodeo or school beautification.

Visit [UWCA.org/volunteer](https://www.uwca.org/volunteer) to learn more.





# A Dollar Makes a Difference

United Way fights for the health, education and financial stability of every person in every community. Your donation adds up to big wins for Central Alabama.

## Consider the impact of your donation:

**\$25** for **A BOOK BAG OF 5 BOOKS** for a child who loves to read and learn

**\$50** for **DELIVERING HOPE** by feeding a homebound senior for a week

**\$100** for **BASIC HOUSEHOLD ITEMS** to help a homeless veteran transition to stable housing

**\$500** for **2,000 MEALS** provided to local families by area food banks within Central Alabama

**\$1,000** for **1 YEAR** of counseling through the Crisis Center's suicide support group



1923

# Investing in Our Future

*In celebration of our centennial, United Way of Central Alabama is honoring our past by investing in our community's future.*

## Forever United Endowment Campaign

The Forever United campaign aims to build a permanent source of community capital and ensure that United Way's work continues in perpetuity. A strong endowment allows United Way to be nimble in response to disasters today, be proactive by addressing tomorrow's emerging needs and ensure the organization's sustainability far into the future.

Leave your legacy to the community by:

- **Including United Way in your estate plans.**
- **Naming United Way as a beneficiary of your retirement plan.**
- **Making a donation to United Way's endowment.**

Email [ForeverUnited@uwca.org](mailto:ForeverUnited@uwca.org) or call **205-458-2022** to learn more.



UNITED WAY OF CENTRAL ALABAMA  
**LEGACY**  
SOCIETY



# Celebrating 100 Years of Service

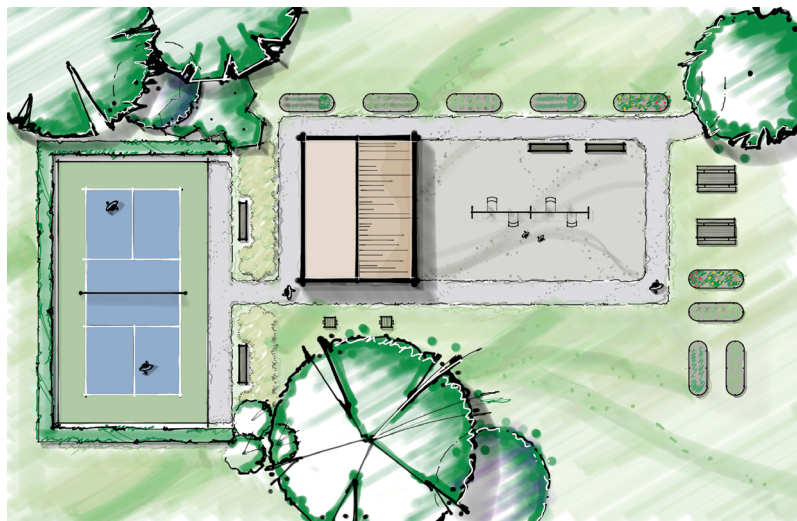
## United Way Centennial Parks

Built by volunteers and made possible through generous sponsorships and donations, United Way is building one community park in each of the six counties we serve. The parks will be customized for each location and include common features such as an outdoor classroom, children's play equipment, and elements that promote healthy living.

Learn more and sign up to volunteer at [uwca.org/CentennialParks](https://uwca.org/CentennialParks)



United Way  
of Central Alabama, Inc.



# Need Help? Get Help.

We want everyone in our community to have the resources they need so they can thrive, not just survive. For example, we make it easier for families to put food on the table, for people experiencing homelessness to find shelter and for anyone in crisis to find support and relief.

It's often said that there's no one in our community who hasn't been touched by United Way, whether they realize it or not. Our many partner agencies and programs answer needs great and small among all types of people. Wherever you are in life, United Way is there.

Here are just a few examples of the partners and programs that stand ready to help.

## **Priority Veteran**

Helping veterans who are facing homelessness.

**1-866-460-3827 | [priorityveteran.org](http://priorityveteran.org)**

## **2-1-1 Information and Referral**

Connecting you to services throughout Central Alabama.

**2-1-1 or 1-888-421-1266 | [uwca.org/2-1-1](http://uwca.org/2-1-1)**

## **Crisis Center**

Confidential counseling for those facing a personal crisis.

**205-323-7777 | [crisiscenterbham.org](http://crisiscenterbham.org)**

## **Meals on Wheels**

Delivering meals to homebound seniors in Jefferson County.

**1-800-AGE-LINE | [mowjeffco.org](http://mowjeffco.org)**

## **Free Tax Preparation**

Providing free tax preparation for qualified individuals.

**1-888-241-1266 | [uwca.org/taxes](http://uwca.org/taxes)**

## **Area Agency on Aging**

Dedicated to meeting many of the unique needs of seniors and people with disabilities.

**1-800-AGE-LINE | [uwaaa.org](http://uwaaa.org)**



# girls inc.

Inspiring all girls  
to be strong,  
smart, and brave





## Our Mission:

To increase the organized capacity of people to care for one another and to improve their community.

Give online at [uwca.org/give](https://uwca.org/give), in person within your workplace or by mail to:

**United Way of Central Alabama**  
P.O. Box 320189 | Birmingham, AL 35232-0189

**[uwca.org](https://uwca.org)**

We are an organization you can trust.

